



Expanding Adapter Stem

- Rubber Expanding Adapter adjusts to the inside of your tubing.
- Light Duty and Light-Medium Duty Casters for Institutional Applications.
- Easy to install, easy to remove.

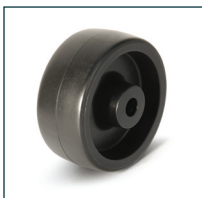
Stem available for BOTH 1" (C-LI Series) and 1-1/4" (C-LM Series) wide wheels, including:



Rubber



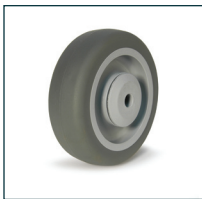
ProTech Poly



Polyolefin



Solid Poly



TPR



Hi-Temp



Part Number	Round Tubing ID	Expanding Range
XA-0875	7/8"	0.852 - 0.927
XA-1050	1-1/2"	1.426 - 1.589

DH Casters International

(800) 543-3413

www.DHCasters.com